

Sinar eXposure™ 6.2

ReadMe

1. Purpose of Use

Sinar eXposure™ is a state-of-the-art application for capturing, processing and exporting images with Sinar digital camera backs. The key benefits of this newly designed application are:

- Modern architecture with consistent support for multi-processor systems
- Intuitive software user interface which can be customized to individual needs
- Support for multiple monitors
- Completely ICC-based workflow
- Optionally, an individual color calibration for digital backs can be performed
- No proprietary RAW data format: the raw data is stored as DNG
- DNG allows for processing the raw data in third-party software packages (e.g., Adobe Lightroom, etc.)
- Support for Eyelike Capture Pro 4.x RAW data (read only); support for CaptureShop 5.x RAW data (.STI) is in preparation

Currently, the following back types are supported:

- Sinarback eMotion 75 and 75 LV
- Sinarback eMotion 54 LV
- Sinarback eMotion 22
- Sinarback eSprit 65 LV
- Sinar Hy6 65 camera system
- Sinarback eVolution 75 H¹

¹ **Note:** in order to operate the Sinarback eVolution 75 H with Sinar eXposure™ 6.2 the Sinarback eVolution Firmware version 2.20 **is required**. The Sinarback eVolution Firmware Updater 2.20 is available for download from the Sinar website www.sinarcameras.com.

Support for additional back types from Sinar will be added step by step in future releases.

2. System Requirements

Sinar eXposure™ version 6.2 supports Apple Macintosh™ computers with both PowerPC (G4/G5) and Intel® processors² with Mac OS 10.4.11 and 10.5.x

² **Note:** Apple MacPro computers with Intel Xeon Nehalem processors are currently not supported.

Minimum System Requirements

Processor:	G4/G5 Processor with 1.5 GHz
Physical RAM:	1 GB
Hard disk space:	3 GB + space for capturing images
Mac OS:	10.4.11 or newer

Recommended System Configuration

Depending on the pixel count of the digital back in use

Processor:	Dual core processor with 2 x 2 GHz or faster
Physical RAM:	2 to 4 GB or more
Hard disk space:	20 GB + space for capturing images
Mac OS:	10.5.4 or newer

3. Installation

To install the Sinar eXposure™ software, double-click the file "Sinar eXposure 6.2(217).dmg". A finder window with the file "Sinar eXposure 6.2.mpkg" opens automatically. To install the software, double-click this file and follow the instructions on the screen.

After the successful installation, close the installation program by clicking the button "Close". The Sinar eXposure™ software is stored in the directory "Applications". An alias of the application is automatically added to the dock items.

4. First Start

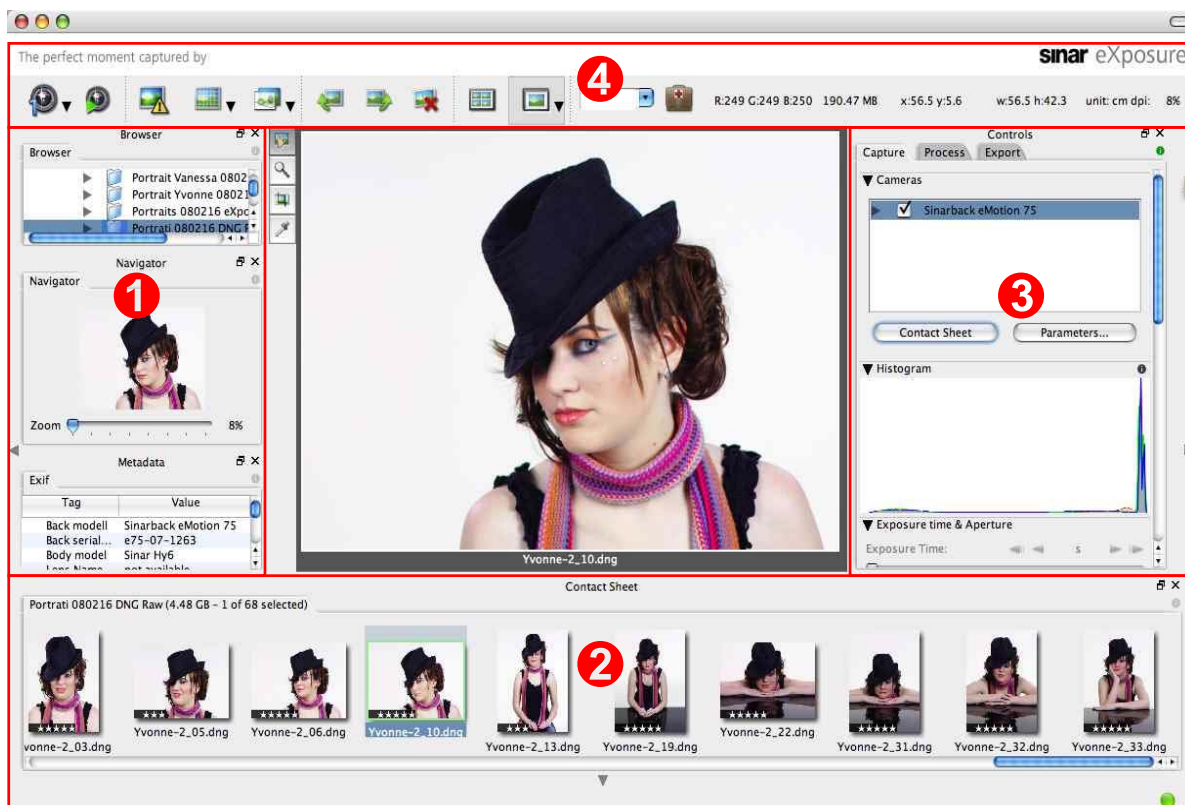
After the software has been installed successfully, it can be opened by double-clicking the file "Sinar eXposure" in the folder "Applications" or by clicking on the respective icon in the dock. After the first launch of the software the user interface is divided into 4 areas (see next page).

Area 1 contains the browser, the Navigator and the display of the meta data.

Area 2 shows the images captured with the software that are stored in a so-called "Contact Sheet".

Area 3 contains a number of tabs that contain functions for the capturing, processing and export of images.

Area 4 is the toolbar. Here you can activate or deactivate various functions related to capturing and viewing images. Additionally, information about the image concerning size, color values of the pixels and the zoom factor are displayed in the upper right corner.

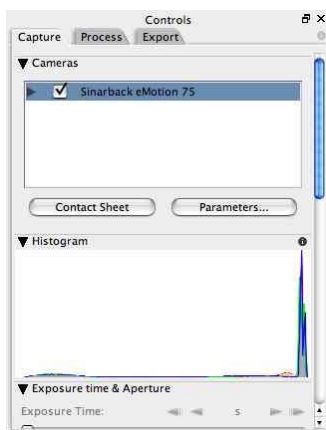


For further details regarding the Sinar eXposure™ user interface, please refer to the online help installed with the software.

5. Connecting a Digital Back with the Software

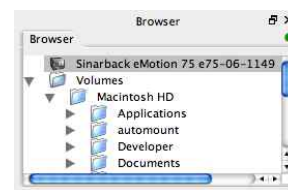
If a digital back is connected with a computer, the name of the back is displayed in Area 3 under the tab "Capture". To connect the digital back, click on the checkbox in front of the name of the digital back.

After the digital back has been connected, select a folder in the browser where the images are to be stored, and click on the button "Contact Sheet" to define this folder as the location for storing the images.



6. Downloading Images from the Internal Memory / CF-Card (Sinarback eMotion)

If a **Sinarback eMotion** is connected, or if a CF-card with the data of a Sinarback eMotion is inserted in a CF-card reader, an entry with the serial number of the respective Sinarback eMotion appears in the browser.



To read out the internal memory, please double-click the serial number in the browser. Area 2 (Contact sheet) now displays the content of the internal memory or the CF-card respectively. In order to copy the images to the hard drive, simply drag-and-drop the images to the desired folder of the browser.

After the images are copied to the hard disk, they can be viewed by selecting the respective folder with a double-click. Area 2 (Contact sheet) is now showing the content of the selected folder instead of the internal memory.

7. Downloading Images from the CF-Card (Sinarback eSprit 65 LV and Sinar Hy6 65)

If a CF-card with the data of a **Sinarback eSprit 65 LV** or **Sinar Hy6 65** is inserted in a CF-card reader, an entry with the serial number of the respective Sinarback eSprit 65 LV or Sinar Hy6 65 appears in the browser.

To read out the content of the CF card, please double-click the serial number in the browser. Area 2 (Contact sheet) now displays the content of the CF card. In order to copy the images to the hard drive, simply drag-and-drop the images to the desired folder of the browser.

After the images are copied to the hard disk, they can be viewed by selecting the respective folder with a double-click. Area 2 (Contact sheet) is now showing the content of the selected folder instead of the internal memory.

8. Exporting Images

To export images from Sinar eXposure™, they have first to be selected in the Contact sheet. The export procedure is started via the menu "Export". If several files are selected for the export, the export tab (Area 3) shows the progress of the export procedure. Presently, TIFF and JPEG are available as file formats for the export.

9. Shading Mode

The Sinar eXposure™ 6.2 includes a unique **Shading Mode** specifically designed for architectural photography with the new **Sinar arTec camera system**. Thanks to the new Shading Mode, photographers can now capture images and create shading files for each individual capturing situation completely mobile. Back in the studio, the shading files can efficiently be applied to the respective images in batch mode.

A shading is created using the Shading diffusor. The shadings have to be created under the same light conditions as the capture. They are saved in the image folder and are loaded and displayed with the images in the Contact sheet.

To activate the shading mode, first of all, the respective icon has to be placed to the toolbar. After activating the shading mode, each image in the contact sheet shows a black check box. To select a file as a shading mark this check box. The selected shading will be applied to the subsequent images until another file is selected as shading. A gray frame marks the images to which the specific shading will be applied.



The shading intensity is selected by marking the pie chart in the upper left corner of the thumbnail. The proportions of the pie chart are visible correspond to the intensity of the brightness correction (0%, 25%, 50%, 75% or 100%). The color correction intensity is always 100%.

In order to create new DNG raw files with the associated shadings applied the user can select the images in the contact sheet and drag them to the destination folder in the browser. He can also have the associated shadings applied on the fly while exporting the images in TIFF or JPEG format.

10. Individual Configuration of the User Interface

The user interface mentioned at the beginning can be customized according to your individual needs. For example, the various elements of the Areas 1, 2 and 3 can be freely arranged around the central image window with drag-and-drop. Furthermore, these three areas can be temporarily hidden or shown by a click on the arrow symbol at the border of the respective area.

Using the functions of the menus "View" and "Dock-Widgets", the elements of these three areas can be freely arranged floating on the main window. Furthermore, they can be displayed semi-transparent. Finally, the single plug-ins of Area 3 can be freely arranged within the tabs, or they can be pulled out of Area 3 and arranged for example on a second screen.

After the installation, the toolbar contains a standard range of buttons. These can be adapted to the individual requirements. In order to do so, select "View / Toolbar / Customize toolbar" in the menu "View".

A window opens offering additional icons that can be added to the toolbar using the drag-and-drop function. Additionally, the window offers several options for the display of the elements in the toolbar.

When closing the software Sinar eXposure™, the last active arrangement of the operational elements is saved and will be loaded at a restart of the application software. If you wish to use the default setting active at the start of the software, remove the file "Sinar eXposure layout_LastRun.ini" from the folder "Library/Preferences" in your user directory.

11. Processing of Images from Eyelike Capture Pro and Sinar CaptureShop™

Basically Sinar eXposure™ is able to read images that have been captured with Eyelike Capture Pro. The support of images captured with Sinar CaptureShop™ 5.x (Sinar Tagged Image, ".sti" raw data) will follow in a future release of Sinar eXposure™.

Changes to the image parameters that are made using Sinar eXposure™ to images captured with these two applications are not saved in the original raw data, therefore any possible damage of the original raw data is prevented.

By dragging images originally captured with Eyelike Capture Pro into a different folder, the original raw data is converted into DNG and saved as copies to the target folder.

12. Compatibility of the Sinar eXposure™ Raw Data with Applications of Third-party Suppliers

Images that are created using Sinar eXposure™ are saved as DNG-files. In principle it is possible to process these images with software packages of third party suppliers that are able to interpret DNG-data. However, it has to be considered that not every application capable of interpreting DNG-data can necessarily read and process the Sinar eXposure™ raw data correctly as well.

Sinar eXposure™ permits the categorization of the images using star symbols (the more stars it has, the more important is the image). This categorization and the meta data stored in the raw data can be interpreted and displayed by software packages of third party suppliers.

13. Important Keyboard Short-Cuts

13.1. Toolbar:

Zoom Tool	"Z"-Key
Crop Tool	"C"-Key
Hand Tool	"H"-Key
Neutral Picker	"N"-Key
Fit image to window	Double-click on Hand Tool

13.2. General

Close application	Command ⌘ + "Q"-Key
Select all	Command ⌘ + "A"-Key
Call default setting	Command ⌘ + ","-Key

13.3. Contact Sheet

Enlarge thumbnails	Command ⌘ + Option and "+"-Key
Reduce thumbnails	Command ⌘ + Option and "-"-Key
Delete images	Command ⌘ + Backspace / Del.-Key

13.4. Preview

Switch between Zoom-in and Zoom-out	Option-Key
Temporary switching to hand tool	Space Bar
Develop-mode: Move single image in comparison mode	Command-Key ⌘

13.5. Renaming of images

Image x of y	Image x of %max
Only even numbers	Image x %e
Only uneven numbers	Image x %o

Hint: For a complete list of short-cuts, please refer to the on-line help installed with Sinar eXposure™.

14. Version Log Sinar eXposure™

Improvements with eXposure 6.2 (compared to 6.1.1)

- a. A new user configurable Noise-reduction filter has been implemented.
- b. Noise-reduction profiles referring to the selected ISO settings have been implemented for the following digital backs: Sinarback eVolution 75 H, Sinarback eMotion 75/75 LV, Sinarback eMotion 54 LV, and Sinarback eSprit 65 LV.
- c. A "Session" tool has been implemented that allows naming a new capturing session in advance.
- d. The "Crop" tool has been improved and new respective features have been implemented (e.g. the color of the frame, new scaling units can be selected.).
- e. A new "Zoom slider" has been implemented in the toolbox allowing either a quick zooming in an opened image or, alternatively, to freely scale the size of the thumbnails of the Contact sheet.
- f. A new "Detail" widget has been introduced. This allows performing everything that can also be done in the full image (except selecting a crop), but quicker. The processes involved are: Zooming in and out, Moving a crop, Setting the gray balance,
- g. A new "Detail" tool has been implemented in the toolbox (loupe with a square). This allows selecting an area in a thumbnail or in an opened image that shall be displayed in the "Detail" widget.
- h. The Live image is now displayed in a separate widget and can be moved at will.
- i. Images that are still either on the internal memory or on a CF-card inside of a connected Sinarback are marked with a padlock. These images cannot be edited and need to previously be imported.
- j. Now individual color calibrations cannot only be done with the X-rite's (former GretagMacbeth) "ColorChecker SG", "ColorChecker 240", and "ColorChecker 24" targets. Individual color calibrations can also be done with the "basICColor DCAM" target with or without the optional use of the "Light trap".
- k. The incompatibility issue that existed with the drivers when a Sinarback 54 MC/M was operated with Sinar CaptureShop™ when Sinar eXposure™ was also installed on the same computer has been resolved.
Note: This is when Sinar CaptureShop™ 5.6.3 or higher and Sinar eXposure™ 6.2 or higher are installed.
- l. Dialog boxes that were displayed behind other widgets are now visible.
- m. The Graphical user interface has been given a new look and some problems occurring with the current look have been solved.
- n. The terms and wording of the User interface have been updated (English and German only).
- o. The all-over performance of the Sinar eXposure™ application has been improved and sped-up.
- p. Many small improvements have been implemented
- q. Various minor bugs have been fixed
- r. A number, visible in the upper left corner on thumbnails in the Contactsheet indicates the CaptureMode in which the image was taken (1- or 4-shot)

15. Known Bugs

- Images originally captured with Eyelike Capture Pro may show a wrong white balance in Sinar eXposure™.
- Setting the white balance in thumbnails using Sinar eXposure™ on images originally captured with Eyelike Capture Pro may produce a wrong white balance in the image overview.
- The Sinarback eVolution 75 H in combination with the Sinarcam 2 and Fuji GX680 is currently not supported.
- The asymmetric swing- and tilt axes of the Sinar p3/p2/p view cameras are currently not displayed in the Live image or image overview.
- After launching Sinar eXposure™ 6.2 and connecting a Sinarback eVolution 75 H with Sinar p3, Sinar Sliding adapter, and Sinaron Digital CMV lens, the exposure time indicated in the user interface is not properly applied. Instead, the software uses the exposure time of 1 second by default. After changing the exposure time with the respective slider the software uses the correct exposure time for all following shots.
- When using the Sinar eXposure™ 6.2 software with Sinarback eVolution 75 H, a Sinar p3 view camera, and Sinar Sliding adapter, the Sinar LC shutter moves in front of the lens when sliding the ground glass into viewing position.
- Using the Sinar LC Shutter with the Sinarback eVolution 75 H and the AUX socket of the Hasselblad V Generic adapter plate 552.36.250 is currently not supported.
- Currently, the DNG files captured with a Sinarback eSprit 65 LV or Sinar Hy6 65 camera system must be downloaded with a CF-Card reader through the Sinar eXposure™ software. DNGs that are copied via the Mac OS Finder will not be displayed in the present Sinar eXposure™ software.

16. Removing the Sinar eXposure™ from Hard disk

If for any reasons Sinar eXposure™ software is required to be completely deleted from the hard disk, the following files have to be removed:

1. In the folder "Applications", the file "**Sinar eXposure**"
2. In the folder "user/Library/Preferences", the files "**Sinar eXposure.sav**" and "**Sinar eXposure layout_LastRun.ini**"
3. In the folder "User/Library/Logs", the file "**Sinar eXposure.log**"
4. In the folder "HD/Library/Application Support", the folder "**Sinar eXposure**"
5. In the folder "HD/Library/Frameworks", the files "**JAPI1394m.framework**" and "**FireCamj.framework**"

Sinar AG, April 2009