

ORIS COLOR TUNER // WEB

Version 1.2

Quick Start Guide



CGS Publishing Technologies International
Hainburg, Germany

30. September 2011

Copyright

© 2011 CGS Publishing Technologies International. All rights reserved.

This document or any part of it may not be reproduced, published, translated or transmitted, in any form or by any means (electronic, mechanical, photocopying, recording or otherwise) without the prior consent of CGS Publishing Technologies International.

Adobe PDF Print Engine 2.5 © 2008 Adobe Systems Incorporated. All rights reserved.

Trademarks

ORIS Color Tuner/Web, ORIS Soft Proof, ORIS Certified Proof and ORIS Certified Monitor are registered trademarks of CGS Publishing Technologies International.

Roland is a registered trademark of Roland DG Corp. Epson and Epson Stylus are trademarks of the Seiko Epson Corporation. Hewlett-Packard is a registered trademark of Hewlett-Packard Company. Canon and the Canon logo are trademarks of Canon Inc.

Microsoft and Windows are trademarks of the Microsoft Corporation. PostScript is a trademark of Adobe Systems, Inc. HKS is a registered trademark of HKS-Warenzeichenverband e.V.

Mac and the Mac logo are trademarks of Apple Computer, Inc., registered in the U.S. and other countries. SWOP is a registered trademark of SWOP Incorporated. GRACoL is a registered trademark of IDEAlliance.

PANTONE® Colors displayed in the software application or in the user documentation may not match PANTONE-identified standards. Consult current PANTONE Color Publications for accurate color.

PANTONE®, PANTONE® Goe™ and other Pantone, Inc. trademarks are the property of Pantone, Inc. © Pantone, Inc., 2003.

Pantone, Inc. is the copyright owner of color data and/or software which are licensed to CGS Publishing Technologies International to distribute for use only in combination with ORIS Color Tuner/Web.

PANTONE Color Data and/or Software shall not be copied onto another disk or into memory unless as part of the execution of ORIS Color Tuner/Web.

All other trademarks referenced in this manual are the property of the respective owners.

Disclaimer of Warranty

To the maximum extent permitted by applicable law, in no event shall CGS Publishing Technologies International or its suppliers be liable for any damages whatsoever (including without limitation, special, incidental, consequential, or indirect damages for personal injury, loss of business profits, business interruption, loss of business information, or any other pecuniary loss) in connection with or arising from the use or inability to use this product, the accompanying manuals, or any related product. In any case, the entire liability of CGS Publishing Technologies International and its suppliers under any provision of this agreement shall be limited to the amount actually paid for the software.

The information contained in this document is subject to change without notice.

Contacting CGS



North and South America, contact:

CGS Publishing Technologies International LLC

Trevor Haworth, President
100 North Sixth Street - Suite 308B
Minneapolis, MN 55403 USA

Tel.: +1 (612) 870 0061
Fax: +1 (612) 870 0063

info@cgsusa.com
sales@cgsusa.com
support@cgsusa.com

Regional Office:

CGS Canada

445 Apple Creek Boulevard, Suite 120
Markham, Ontario L3R 9X7 Canada

Tel.: +1 (905) 475 3632
Toll Free Tel.: +1 (866) CGS-ORIS
Fax: +1 (905) 475 0114
Toll Free Fax: +1 (866) CGS 7755

info@cgscanada.com
sales@cgscanada.com

Regional Office:

CGS Latinoamérica

Alborada 124-PB3
México DF 14010
México

Tel.: +52 (55) 5666-1950
Fax.: +52 (55) 5666-2328
informacion@cgsusa.com

Europe, Asia, Africa and Australia, contact:

CGS Publishing Technologies International GmbH

Trevor Haworth, President
Kettelerstr. 24
D-63512 Hainburg, Germany

Tel.: +49 6182 9626 0
Fax: +49 6182 9626 99

info@cgs-oris.com
sales@cgs-oris.com
support@cgs-oris.com

Regional Office:

CGS France

13-15 Rue Auguste Laurent
75011 Paris, France

Tel.: +33 1 4493 9751
Mobile: +33 629 442 047
Fax +33 1 4493 8768

serge@cgs-oris.com

Regional Office:

CGS Japan

Kudan Tsuruya Bld. 5th floor
Kudan Minami 2-5-10
Tokyo 102-0074, Japan

Tel.: +81-3-3288-0311
Fax: +81-3-3288-0312

moto.nagai@cgsjapan.com

Table of Contents

Requirements	1
Installation	1
Starting Program.....	2
Selecting Measurement Device	2
Creating Output Queues.....	2
Selecting Output Queues and Jobs	3
Additional Settings	4
Printing.....	4
Job Control	5
Remote Proofing	6
Granting Access to Remote Users	6
Starting Web Client.....	7
Using Web Client.....	7
Soft Proofing	8
Requirements	8
Creating Soft Proof PDFs	8
Verifying Soft Proofs in Acrobat.....	9
Scatter Proofing	10
Proof Certification.....	11
Further Information.....	12

Quick Start

Requirements

- Window Vista Business, Windows XP Professional (SP3 or higher), Windows 7 Professional, Windows Server 2008, or Windows 2003 (SP2 or higher)
- Internet Explorer 7 or higher (ORIS Color Tuner/Web Server)
- Internet Explorer 7, Firefox 3, Opera 9, Safari 3.2, or higher (Client)
- JavaScript and Java enabled
- Base license for ORIS Color Tuner/Web
- Software license, printer license
- Proofing halftone data: Screened 1-bit test charts and color bars, special RFP files (must be created by user)
- Measurement device

Installation

1. Connect the printer and measurement device to your computer.
2. Install the driver provided with the measurement device.
3. Install the manufacturer's original printer driver.
4. Install the ORIS Color Tuner/Web plug-in for your printer.

Plug-ins are available on the ORIS Color Tuner/Web installation CD and on our website <http://www.cgs-oris.com>.

5. Connect the ORIS Color Tuner/Web dongle to your computer.
6. Install ORIS Color Tuner/Web.

This will automatically install and create the following:

- Apache Web Service
- Java Runtime Engine
- Windows user named 'ORIS-Service'

Starting Program

Select START | ALL PROGRAMS | CGS | ORIS COLOR TUNER WEB.

Selecting Measurement Device


Select FILE | PREFERENCES, then click on:

- MEASUREMENT DEVICE SETUP if device is connected to computer
- EMBEDDED MEASURE DEVICES if device is integrated into printer

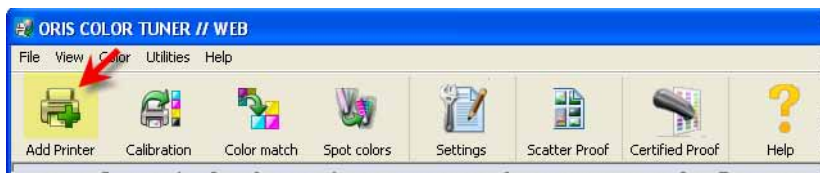
Verify the instrument properties. The RESPONSE STATUS must be set in accordance with the reference printer profile (RFP file) you are using.



Creating Output Queues

Click  to start the Setup Wizard. Your printer will be set up for contract proofing. You will be guided step by step through this process which includes calibration, color matching and spot color correction.

All settings made with this wizard will be assigned to an *output queue*. Output queues are listed under the printer name. Every output queue will be assigned to a *watched folder*. Share the watched folder on the network.



Selecting Output Queues and Jobs

To see the list of output queues and jobs:



Click on the printer



Click on the queue to select it.



To select jobs:

- Click on first column (STATUS).
- SHIFT-click to select job range.
- SHIFT-click active job to select all jobs.

Blue background:



- In first column: Job selected
- In complete line: Job active

Click here:

- (1) To make more room for job list.
- (2) To enlarge preview image.

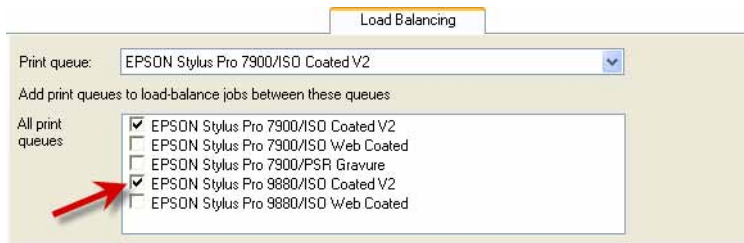


Additional Settings

Select the output queue, then click . This opens a dialog that allows you to verify, correct and add queue settings. Likewise, select a job and click  if you want to modify the settings of this one job only.

Note: The changes will only apply to new jobs added to this queue.

Example: Load Balancing



Printing

To output jobs using the settings defined for a particular queue, use one of the following methods:

Watched Folders

Add the files to the *watched folder* assigned to the output queue.

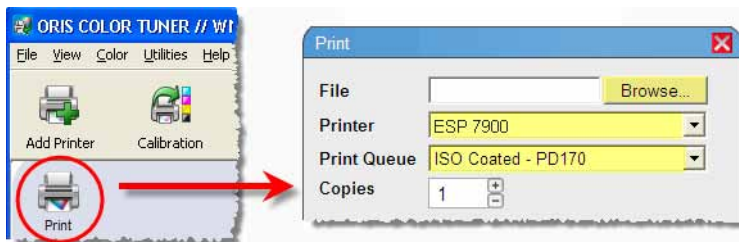
Virtual Printers

Directly in your DTP application (e.g. QuarkXPress), print to a *virtual PostScript printer* that outputs to the queue's watched folder.

Virtual printers have the name ORIS for <printer or format> <queue>.

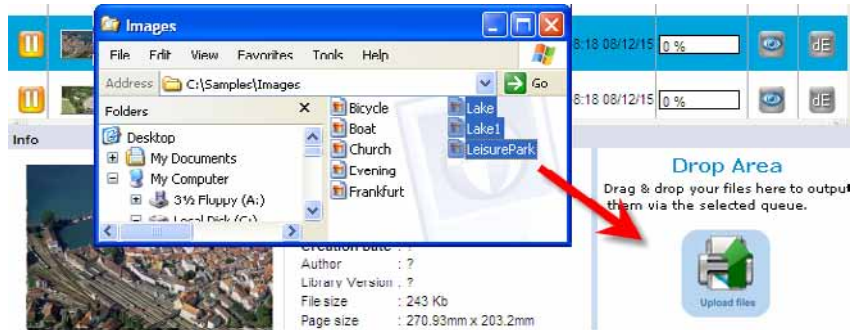
Dialog

Click this button, then select a file (only one), the printer or output format, and the output queue.



Drop Area

Select the queue. Then drag the files onto the DROP AREA.



Printing Halftone Data







When using the DROP AREA, upload all separation files *in one go*.

The separation files are only combined into a job if they follow certain file naming conventions. The file name patterns produced by Harlequin, Flex, Prinergy, Studio or Rampage RIPs are supported, for example.




Job Control

Starting and Stopping


Select an output queue, then click

-  to process all jobs waiting in the queue. 
-  to put all jobs in the output queue on hold. 
-  to do the same as ,
- but for all queues of the printer.

Select jobs, then click

-  to start the jobs, if they have been put on hold.
-  to put the jobs on hold.
-  to cancel running jobs (may have side effects!)

Reprinting

-  Select jobs, then click this button.

Deleting

- Select jobs, then click this button. Also deletes queues and printers if they are empty (no jobs or queues inside).

Job Status

- On hold (stopped)
- Output successfully
- Waiting to be processed
- Output with warnings
- Currently being processed
- Output failed
- Currently being canceled (

Remote Proofing

Using a web browser (Web Client), proofing, soft proofing and job tracking can be done from remote locations via Internet or local network.

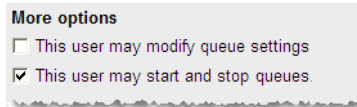
Granting Access to Remote Users

Create a user account for every user who wants to access ORIS Color Tuner/Web queues over the Internet or local network.

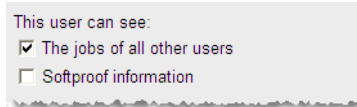
1. Select FILE | USER ACCOUNTS.
2. Click on +NEW USER.
3. Enter the user name, e-mail address and password.
4. Select the output queues that should be visible to this user.



5. Set the user rights.



Disable all of the THIS USER MAY... options if the user should be allowed to view jobs only, without the ability to output or change jobs.



If the user should be allowed to see jobs created in a DTP application by printing to a virtual PS printer, enable ...THE JOBS OF ALL OTHER USERS.

Starting Web Client

Enter the following into the browser's address line:

- Internet: DNS name (fully qualified domain name) of the ORIS Color Tuner/Web Server
- Local network: Name or IP address of the computer that runs the ORIS Color Tuner/Web Server software
- Local computer: **localhost**

Then log on with your user name and password.

Using Web Client

The Web Client's user interface is similar to that of the server application. It can be operated in a similar way, but the functionality is restricted.



Click here to modify some of the settings defined for the job or output queue, e.g. scaling or certification requests.



Drag your documents here to output them using the settings of the selected output queue.

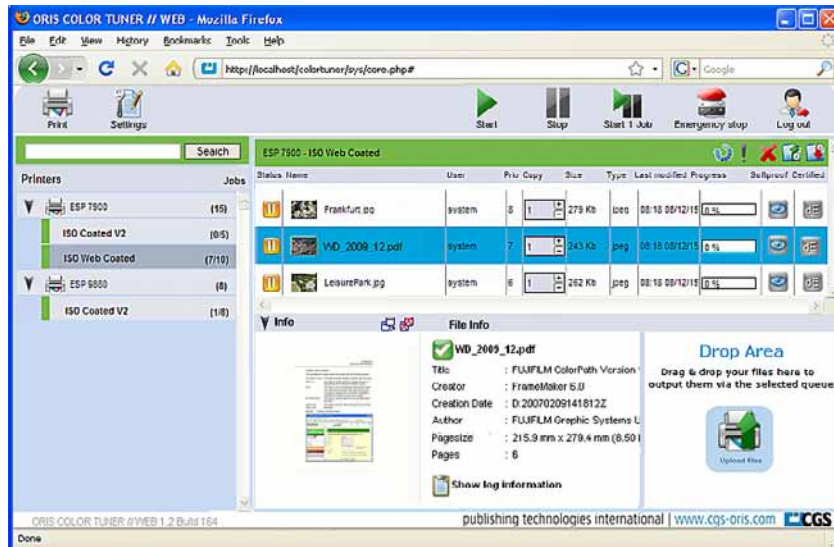


Click here to output a single file. You can make some modifications here, i.e. override the settings of the output queue.



Click here to log out (= F5).

Note: Some buttons may be unavailable, depending on the user rights. Queues, printers and output formats cannot be deleted via Web Client.



Soft Proofing

Requirements


Acrobat Standard or Professional, Version 8 or higher

Color management and paper color simulation must be enabled in Acrobat. PDF files must open in Acrobat, not in the browser window. Configure Acrobat and the web browser accordingly.

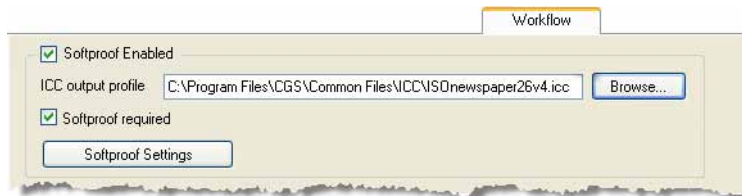
ORIS Soft Proof plug-in V3.0.4, available from the CGS website.




The monitor must be calibrated and profiled within the last 30 days. Its color space must be sufficiently large.


Creating Soft Proof PDFs

1. Select the output queue, then click on .
2. Click on the WORKFLOW tab.

3. Enable the option **SOFTPROOF ENABLED**, select an **ICC OUTPUT PROFILE**, then enable **SOFTPROOF REQUIRED**.



4. Process the files. The low-res PDF files will be created:  => 
5. Click  to open the PDF file in Acrobat.

Status	Name	User	Prio	Copy	Size	Type	Last modified	Progress	Softproof	Certified
	 Frankfurt.jpg	system	normal (0)		279 Kb	jpeg	08:18 08/12/15	<input type="text" value="0 %"/>		

Verifying Soft Proofs in Acrobat



Open ORIS SOFT PROOF TOOLBAR

Acrobat Version 10 (Acrobat X):






1. Select **VIEW | TOOLS | PLUG-IN ORIS SOFT PROOF TOOLBAR**.
2. Right-click each toolbar button and select **ADD TO QUICK TOOLS**.

The toolbar is displayed automatically in Acrobat Version 8 and 9.




Viewing Status

-  OK, colors are displayed correctly
-  Uncalibrated monitor or incorrect color management settings

Place a Stamp


-  Approved, viewing status is OK ()
-  Approved, viewing status is not OK ()
-  Rejected

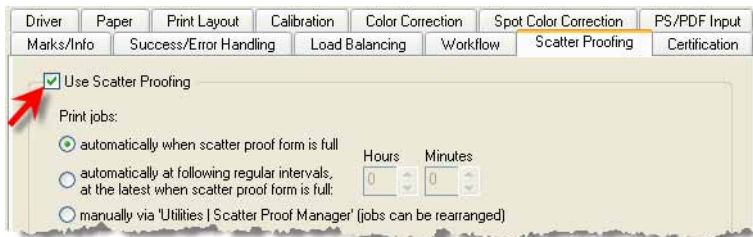
Send Status to ORIS Color Tuner/Web

-  Click this button.
The job will be output if it was stamped with  or .

Scatter Proofing


How to print multiple jobs on the same sheet to save paper:

1. Select the output queue, then click on .
2. Enable and configure scatter proofing.

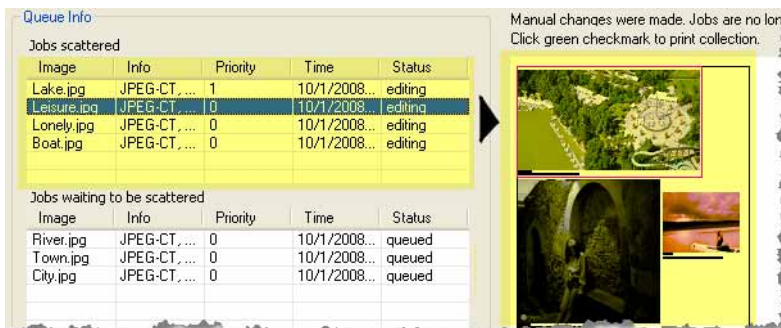


3. Print the jobs.

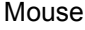



The jobs are placed on a temporary page (called *scatter proof form*). They are printed automatically when no further job can be fitted on it.




Click  if they should be printed immediately.

4. Click  to view or edit the scatter proof form (marked up in yellow).




5. Your options here:

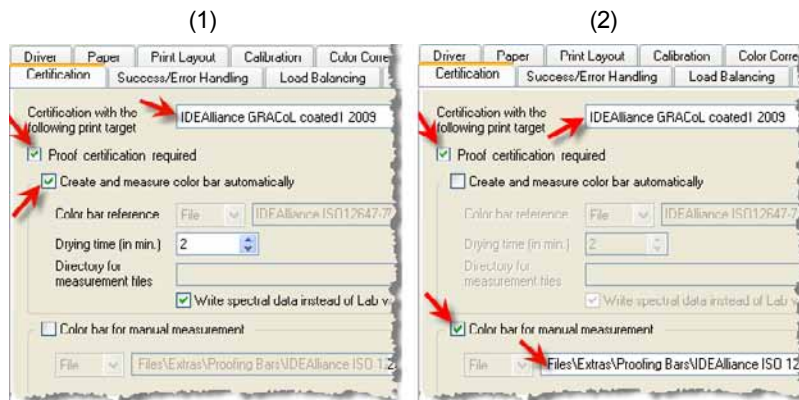
	Rearrange thumbnail images	Only if PRINT JOBS: MANUALLY... is enabled
	Rotate job by 90°	
	Crop image	
	Add waiting job, remove job	


	Delete job	Always available
	Duplicate job	
	Increase and decrease priority	

Proof Certification






This functionality requires a software license for ORIS Certified Proof. A 30-day fully functional demo version has been installed automatically. If the database connection is set up accordingly, ORIS Certified Proof can also run on a different computer in the local network.

1. Select the output queue, click on  and then on CERTIFICATION.
2. Select an ORIS Certified Proof print target.
3. Enable PROOF CERTIFICATION REQUIRED.
4. Do one of the following (applies to CT data only):
 - Measurement device embedded in printer (1):
Enable CREATE AND MEASURE COLOR BAR AUTOMATICALLY.
 - Measurement device connected to computer (2):
Enable COLOR BAR FOR MANUAL MEASUREMENT, select a color bar.



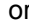



5. Output jobs via this queue. The icon  indicates 'certification required'.



6. Printers with embedded spectrophotometer: Proof certification runs fully automatically. The result will be printed on the proof in the form of a 'label' (Epson printers only). Proceed with step 9.
7. Select the job, then click  to start ORIS Certified Proof.
8. Click  and measure the color bar.
9. In ORIS Color Tuner/Web, the overall result is indicated as follows:
 -  Proof within (strict) tolerances
 -  Proof within standard, but outside strict tolerances
 -  Proof out of (standard) tolerance




10. Click the , , or  icon to see the measurement results in detail.

 Proof has failed certification.

		Measurement Data											
		Target			Actual			Deviations					
Color Patch		L	a	b	L	a	b	dE	dL	da	db	dH	dC
A1		55.00	-37.00	-50.00	55.48	-38.56	-44.73	5.52	0.48	-1.56	5.27	-4.51	-3.14
A2		66.90	-24.70	-37.10	65.31	-27.74	-32.42	5.80	-1.59	-3.04	4.68	-5.25	-1.90
A3		79.70	-12.50	-21.80	77.13	-15.41	-17.61	5.71	-2.57	-2.91	4.19	-4.80	-1.73
A4		87.70	-5.80	-11.80	84.87	-7.84	-7.89	5.24	-2.83	-2.04	3.91	-3.92	-2.03
A5		91.50	-3.00	-7.00	88.66	-4.23	-3.13	4.96	-2.84	-1.23	3.87	-3.31	-2.35

Further Information

- Online help file:  or HELP button in a dialog
- User manual (PDF file): START | ALL PROGRAMS | CGS | ORIS COLOR TUNER WEB USER MANUAL
- User forum: <http://www.cgs-oris.com>, SUPPORT | USER FORUM.
- Hotline: support@cgs-oris.com, +49 (61 82) 96 26 0

